

# INTERSTELLAR

MINDFUL LUXURY



*Signature Collection*  
BRANDED RESIDENCES BY MR.EIGHT

BRANDED RESIDENCES BY MR.EIGHT

# INTERSTELLAR

TOWER

JUMEIRAH VILLAGE TRIANGLE

Welcome to Interstellar Tower, a landmark of visionary living located in the heart of Jumeirah Village Triangle (JVT) — one of Dubai's most established and greenest master-planned communities. Known for its tree-lined streets, tranquil parks, and abundance of international schools, JVT offers a peaceful and family-friendly environment with exceptional connectivity. Strategically situated just 9 minutes from Bluewaters Island and Dubai Marina via Sheikh Mohammed Bin Zayed Road, the area is also adjacent to the upcoming Green Spine, the world's first all-electric elevated metro line, ensuring sustainable and seamless access across the city. Adding to its appeal, JVT will be home to a large new shopping mall set to open in 2027, bringing premium retail and entertainment directly to residents' doorsteps. Interstellar Tower is a one-of-a-kind project that seamlessly integrates residential apartments, premium office spaces, and vibrant commercial zones within a single architectural concept. The tower features a striking double-height lobby with refined finishes and hosts a collection of boutique French bakeries, including a signature artisanal sourdough bakery. Prioritizing well-being, community, and sustainability, Interstellar Tower offers an unmatched range of lifestyle amenities: two expansive infinity pools, tennis and padel courts, a children's nursery, a rooftop cinema, a rooftop observatory with a telescope for stargazing, a BBQ area with panoramic skyline views, and the signature Slow River — the highest and slowest-flowing artificial rooftop stream in Dubai, flowing along the podium terrace. Interstellar Tower is not just a place to live — it's a complete living experience, blending nature, innovation, and architectural elegance into one future-forward address.



# LUXURY LIFESTYLE AWARDS

## INTERSTELLAR TOWER

Luxury Lifestyle Awards is a globally recognized organization based in the United States that honors excellence in high-end products and services. The association celebrates the finest in luxury across various industries, assisting consumers in identifying the most outstanding brands and developments worldwide.



LUXURY LIFESTYLE AWARDS 2025

- BEST SUSTAINABLE HIGH RISE LIVING
- BEST SUSTAINABLE RESIDENTIAL DEVELOPMENT

THE INTERSTELLAR TOWER HAS BEEN PROUDLY RECOGNIZED WITH AWARDS IN TWO PRESTIGIOUS CATEGORIES: SUSTAINABLE HIGH RISE LIVING AND SUSTAINABLE RESIDENTIAL DEVELOPMENT. THESE ACCOLADES HIGHLIGHT THE PROJECT'S COMMITMENT TO INNOVATIVE DESIGN, ENVIRONMENTALLY CONSCIOUS CONSTRUCTION, AND THE CREATION OF A TRULY FUTURE-READY COMMUNITY.

JUMEIRAH VILLAGE TRIANGLE

MR. EIGHT DEVELOPMENT



*Residence*

# INTERSTELLAR

INTERSTELLAR TOWER BRANDED RESIDENCES BY MR. EIGHT

BAH VILLAGE TRIANGLE

MR. EIGHT DEVELOPMENT





JUMEIRAH VILLAGE TRISTAR

MARBLE DEVELOPMENT

# Grand Entrance

ALL RESIDENTS AND THEIR GUESTS AT INTERSTELLAR TOWER BENEFIT FROM CONVENIENT VALET PARKING, ENSURING A SMOOTH AND SEAMLESS WELCOME EVERY TIME.

JUMEIRAH VILLAGE TRIANGLE

MR. EIGHT DEVELOPMENT



ACADEMY AWARD-WINNER ADRIEN BRODY JOINED MR. EIGHT DEVELOPMENT TO MARK THE OFFICIAL LAUNCH AT THE ROYAL ATLANTIS 2025  
A UNIQUE COLLABORATION THAT BROUGHT TOGETHER TIMELESS CINEMATIC ELEGANCE AND ARCHITECTURAL EXCELLENCE

# ∞ Mr. Eight *Development*

JUMEIRAH VILLAGE TRIANGLE

MR. EIGHT DEVELOPMENT

EVERY MR. EIGHT DEVELOPMENT EVENT BRINGS TOGETHER INDUSTRY LEADERS AND KEY DECISION-MAKERS.  
THE ROYAL ATLANTIS GATHERING IS A STRONG EXAMPLE OF THIS.  
FOLLOW US ON INSTAGRAM [@MR8DEVELOPMENT](https://www.instagram.com/mr8development) FOR UPDATES ON UPCOMING EVENTS.



# MR.EIGHT WORLD TOP 100 DEVELOPER

Mr. Eight Development, has been recognized among the Top 100 Developers Worldwide by the U.S.-based Luxury Lifestyle Awards, highlighting its excellence in architecture, innovation, and design.

## INVESTOR AND LIFESTYLE OPPORTUNITY

This residence brings together the best of both worlds a smart investment and an elevated way of life. Perfectly positioned within one of Dubai Islands' most promising locations, it combines strong growth potential with the comfort, beauty, and privileges of boutique waterfront living. Whether you're seeking long-term value or a home that enhances your everyday experience, this address offers a rare opportunity to enjoy both financial return and refined lifestyle benefits.

## EXCLUSIVE HOMEOWNER EXPERIENCE

Discover your world at Dubai Islands. Here, every day is designed around you from two championship golf courses and unspoiled beaches to luxury shopping, gourmet dining. It's a place where your lifestyle meets effortless convenience and every step feels like home.

## DUBAI ISLAND AND URBAN MASTER PLAN 2040

Dubai Islands forms a priority development area under the Dubai 2040 Urban Master Plan — a strategic vision personally endorsed by Sheikh Mohammed bin Rashid Al Maktoum. Re-branded from “Deira Islands” in 2022, the project now serves as a flagship initiative for Dubai's future growth, sustainability and global prestige.



**EMILS DAUJATS**  
Director



**ALEXANDRA MOGILEVSKAYA**  
Executive Director



**CYNTHIA CHONG**  
Head of Sales

## **OUR SUPERPOWER: WE DESIGN, DEVELOP, AND BUILD EVERYTHING IN-HOUSE**

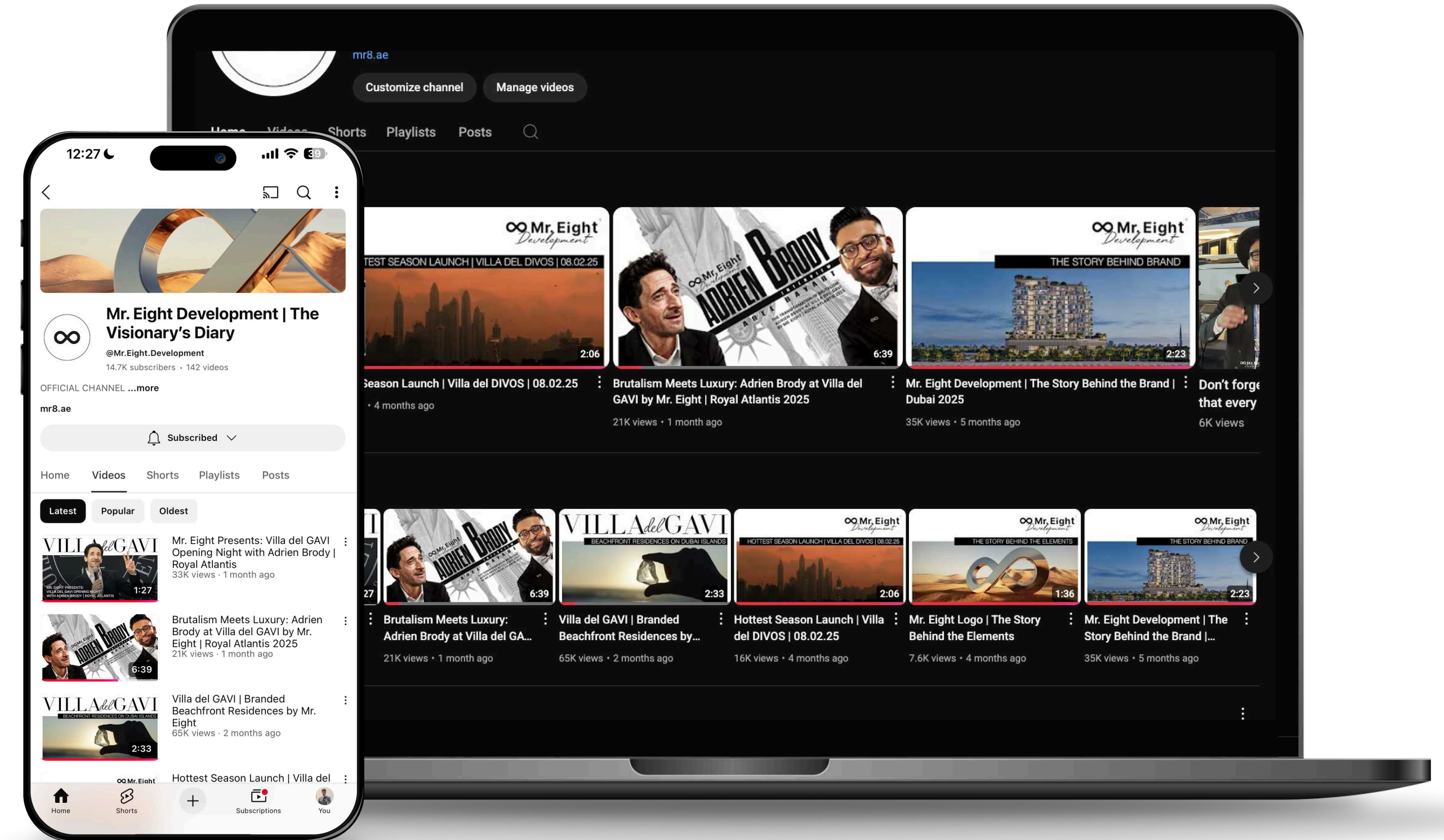
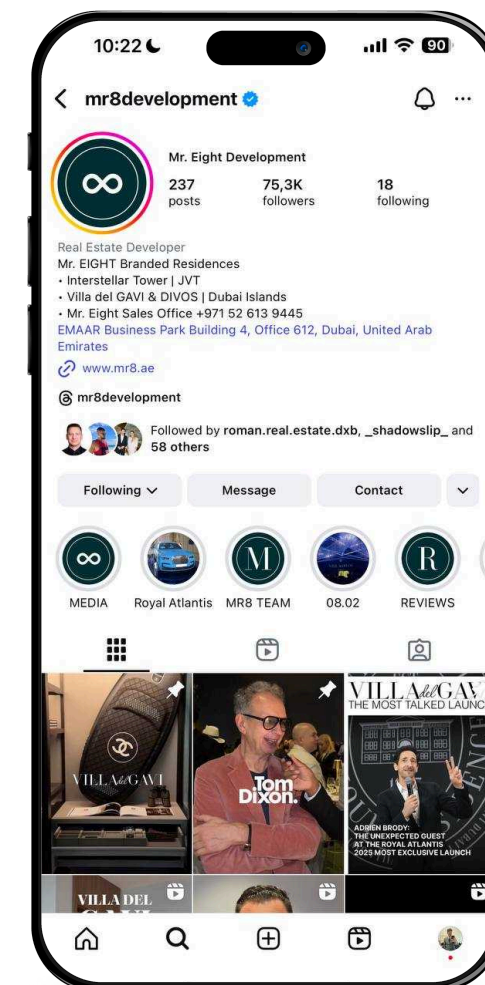
Mr. Eight Development is a boutique real estate developer dedicated to creating exclusive residences that embody European refinement and craftsmanship. Each project reflects a balance of timeless design, thoughtful functionality, and emotional warmth — homes crafted with the same care and detail we would desire for ourselves. Our vision goes beyond construction; it's about shaping meaningful living spaces that inspire comfort, beauty, and lasting value.

*p.s. mr. eight*



## FOLLOW US ON INSTAGRAM & YOUTUBE

Subscribe us on Instagram [@mr8development](https://www.instagram.com/mr8development) to be the first to receive project news, exclusive previews, and real-time updates.



▶ SUBSCRIBE YOUTUBE

▶ SUBSCRIBE INSTAGRAM

# ∞ Mr. Eight Development

## PRESS & MEDIA

Press Articles About Mr. Eight Development Featured in the Most Respected and Influential UAE Publications



®

### Interstellar Tower: JVT's first branded residence by Mr. Eight sets a new standard for serviced living

Interstellar Tower wins twice at the prestigious Luxury Lifestyle Awards, USA

Suha Sabith

Mon 14 Jul 2025



Interstellar Tower by Mr. Eight Development

Mr. Eight Development has launched its latest residential project, Interstellar Tower, in Jumeirah Village Triangle (JVT), a well-established neighbourhood in Dubai known for its green spaces and family-oriented layout. The tower introduces a focused approach to luxurious urban living, offering carefully planned spaces, family-centric amenities, and functional design elements that reflect the developer's decade-long experience in European real estate.

## BUSINESS

Banking & Insurance Aviation **Property** Tax News Corporate Tax Analysis Travel & Tourism Markets Retail Corporate News Tech Auto

PARTNER CONTENT

REACH BY GULF NEWS

### Mr. Eight Development launches in Dubai to bring boutique-style living to the UAE

Developer to launch eight projects and a Membership Club on Dubai Islands

Published: December 16, 2024, 10:42  
Reach by Gulf News

Follow us + Facebook X WhatsApp Telegram Share

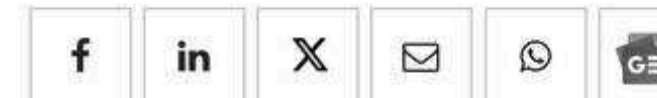


### Mr. Eight development's Villa del Gavi wins 2025 Luxury Lifestyle Award

Dubai-based developer celebrates recognition for branded residence project on Dubai Islands

By Contributor

Fri 13 Jun 2025



ADRIEN BRODY OFFICIALLY OPENED THE VILLA DEL GAVI LAUNCH BY CUTTING THE RED RIBBON AT THE ROYAL ATLANTIS, 2025

## CONSTRUCTION

BUSINESS NEWS 2025

### Mr. Eight Development

Emils Daujats, Director

Mr. Eight Development, a European property developer with over 20 years of success, is redefining family living in the UAE with boutique-inspired residences that prioritize stylish design and personalized experiences. Focused on superior construction and community distinction, their projects feature a limited number of units to foster resident intimacy and include premium amenities. Expanding into Dubai Islands, the developer has secured eight plots and plans to launch five projects in 2025. Leading this initiative is Villa del Divos, set to debut in Q1 2025, marking Mr. Eight Development's commitment to innovative, high-quality living in the region. Residents of Mr. Eight Developments on Dubai Islands will enjoy exclusive perks, including a Members Club with Rolls-Royce chauffeurs, a luxury Riva boat, beach club access, valet parking, and on-site spa and bellboy services.

Emils Daujats, Director at Mr. Eight Development, spearheads sales efforts and manages broker relations for the company's premium UAE projects. With extensive expertise in off-plan sales and international business development, Daujats plays a pivotal role in driving growth and revenue for the developer's innovative ventures.

Each Mr. Eight Development project is uniquely designed, ensuring no two are alike.

"Our projects will offer a boutique resort experience, allowing residents to enjoy an unparalleled premium living environment. We plan to invest around one billion dirhams across our Dubai Island projects, ensuring they are exceptional in both design and construction quality."

• Emils Daujats



WWW.CBNME.COM

# DUBAI

map

- 1 INTERSTELLAR Tower
- 2 Jumeirah Village Triangle
- 3 Palm Jumeirah
- 4 Burj Al Arab
- 5 VCV
- 6 Dubai Marina
- 7 Al Khail Avenue Mall
- 8 Jebel Ali Race Course
- 9 Bluewaters
- 10 Jumeirah Islands
- 11 Emirates Hills
- 12 Dubai Green Spine
- 13 Al Maktoum International Airport (DWC)

- 4 Minutes Sunmarke School
- 5 Minutes Arcadia School
- 10 Minutes Bluewaters Island
- 13 Minutes Dubai Marina
- 14 Minutes Montgomerie Golf Club
- 16 Minutes Circle Mall
- 17 Minutes Palm Jumeriah
- 18 Minutes Mall Of The Emirates
- 18 Minutes Jumeriah Golf Club
- 19 Minutes Dubai Hills Mall
- 19 Minutes Topgolf Dubai
- 21 Minutes Burj Al Arab
- 22 Minutes Dubai Hills Golf Club
- 25 Minutes Jumeirah Beach
- 25 Minutes Burj Khalifa
- 30 Minutes Dubai International Airport (DXB)

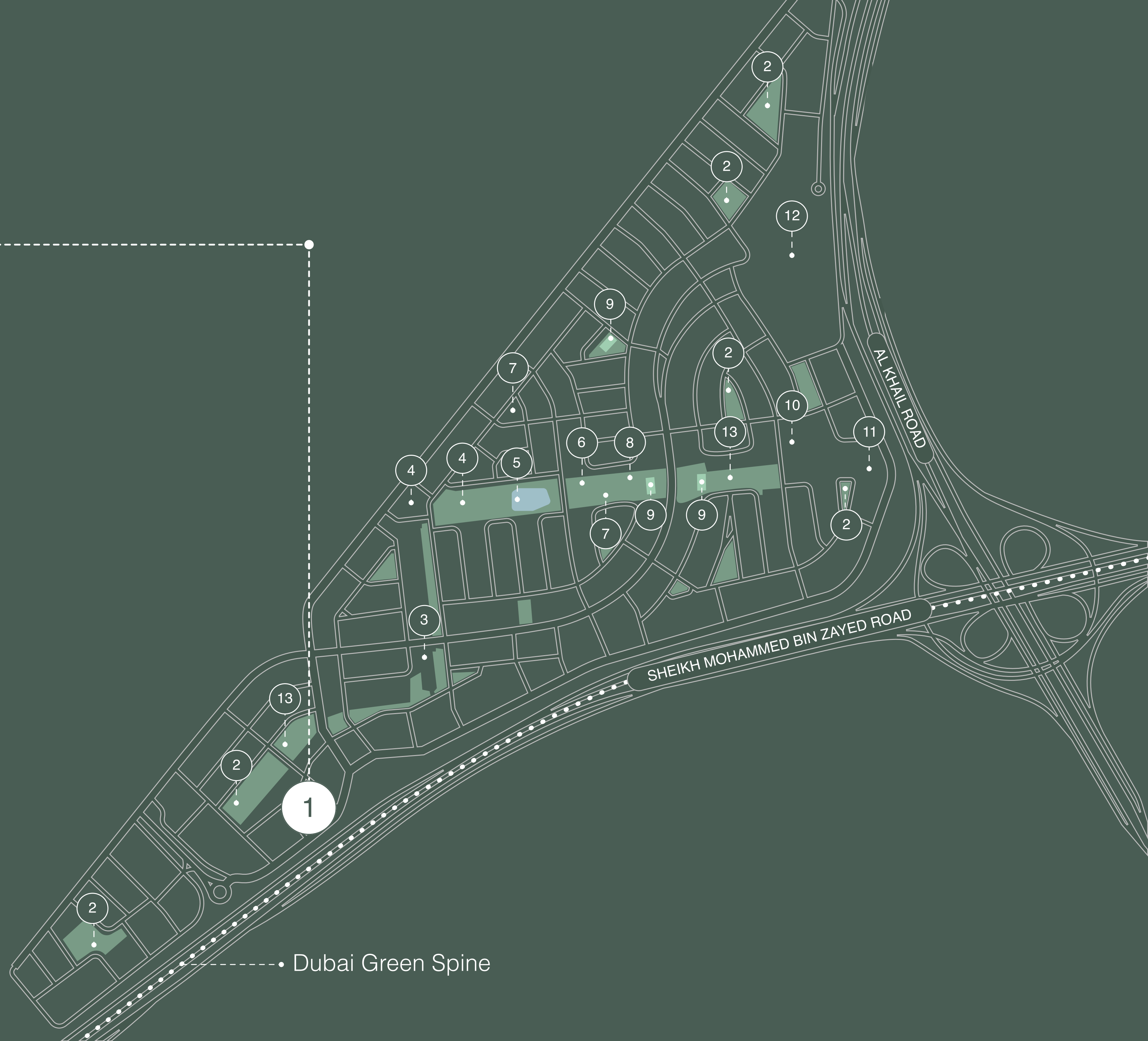




# INTERSTELLAR *Tower*

## JUMEIRAH VILLAGE TRIANGLE *area map*

- |   |                        |    |                      |
|---|------------------------|----|----------------------|
| 1 | Interstellar Tower     | 9  | Tennis Courts        |
| 2 | Community Parks        | 10 | Sunmarke School      |
| 3 | JVT Water Fountain     | 11 | Supermarket          |
| 4 | Arcadia British School | 12 | Al Khail Avenue Mall |
| 5 | JVT Pond               | 13 | Dog Park             |
| 6 | Soccer Field           |    |                      |
| 7 | Tennis Courts          |    |                      |
| 8 | Basketball Courts      |    |                      |



# MINDFUL LUXURY

INTERSTELLAR TOWER BRANDED RESIDENCES BY MR EIGHT

PRESENTS

WHERE ELEGANCE, COMFORT, AND HIGH QUALITY  
MEET SUSTAINABILITY, ETHICS, AND EMOTIONAL VALUE

JUMEIRAH VILLAGE TRIANGLE

MR. EIGHT DEVELOPMENT



JUMEIRAH VILLAGE TRIANGLE

INTERSTELLAR RESIDENCES | DUBAI

03

MR. EIGHT DEVELOPMENT

PG. 012

JUMEIRAH VILLAGE TRIANGLE

# Rooftop

## LIKE NO OTHER

RESIDENTS-ONLY ROOFTOP WITH BBQ LOUNGE, FIRE PIT, AND STARGAZING TELESCOPE  
THE TRUE HEART OF INTERSTELLAR TOWER'S CELESTIAL LIFESTYLE.

MR. EIGHT DEVELOPMENT

# Open air cinema

THE ROOFTOP OF INTERSTELLAR TOWER IS A PRIVATE HAVEN RESERVED EXCLUSIVELY FOR OUR RESIDENTS — A PERFECT SETTING TO HOST CELEBRATIONS, INVITE FRIENDS, OR SIMPLY UNWIND UNDER THE STARS. MANAGED BY MR. EIGHT SERVICES, THE SPACE IS THOUGHTFULLY CURATED AND PROFESSIONALLY MAINTAINED TO ENSURE EFFORTLESS ENJOYMENT AT ANY TIME.

JUMEIRAH VILLAGE TRIANGLE

MR. EIGHT DEVELOPMENT





# OPEN-AIR CINEMA WITH BBQ LOUNGE

THE ROOFTOP OF INTERSTELLAR TOWER IS A PRIVATE HAVEN RESERVED EXCLUSIVELY FOR OUR RESIDENTS — A PERFECT SETTING TO HOST CELEBRATIONS, INVITE FRIENDS, OR SIMPLY UNWIND UNDER THE STARS. MANAGED BY MR. EIGHT SERVICES, THE SPACE IS THOUGHTFULLY CURATED AND PROFESSIONALLY MAINTAINED TO ENSURE EFFORTLESS ENJOYMENT AT ANY TIME.

JUMEIRAH VILLAGE TRIANGLE

MR. EIGHT DEVELOPMENT



JUMEIRAH VILLAGE TRIANGLE

MR. EIGHT DEVELOPMENT



JUMEIRAH VILLAGE TRIANGLE



# GREEN PARK BY MR. EIGHT

A SIGNATURE LANDSCAPE BY MR. EIGHT — WHERE CURATED GREENERY, PEACEFUL PATHWAYS, AND ELEGANT OUTDOOR SPACES COME TOGETHER TO CREATE A REFINED NATURAL RETREAT FOR RESIDENTS.



MR. EIGHT DEVELOPMENT

INTERSTELLAR *Green Park*  
A SANCTUARY BETWEEN THE EARTH & THE STARS

JUMEIRAH VILLAGE TRIANGLE

MR. EIGHT DEVELOPMENT



JUMEIRAH VILLAGE TRIANGLE

MR. EIGHT DEVELOPMENT



*Interstellar Residences*  
**SUNSET RIVER DECK**

JUMEIRAH VILLAGE TRIANGLE

MR. HEIGHT DEVELOPMENT

A HIDDEN PARADISE ELEVATED ABOVE THE CITY, THE PODIUM OASIS AT INTERSTELLAR TOWER IS A SERENE ESCAPE FLOWING WITH BEAUTY AND TRANQUILITY. AT ITS HEART, A GENTLY WINDING ARTIFICIAL RIVER IS EMBRACED BY LUSH GREENERY, WHERE PEACOCKS ROAM FREELY AND SHADED PICNIC NOOKS INVITE QUIET GATHERINGS. ROMANTIC BRIDGES ARCH OVER THE WATER, CREATING THE PERFECT BACKDROP FOR EVENING STROLLS AND INTIMATE MOMENTS UNDER THE STARS.

ATHLETIC  
STANDARD SWIMMING  
IN A SUBLIME  
NATURAL LANDSCAPE

JUMEIRAH VILLAGE TRIANGLE

MR. EIGHT DEVELOPMENT

*Sustainable Vision*  
**AQUA WELLNESS**

ENJOY A REFRESHING SWIM IN OUR MODERN LAP POOL —  
THE PERFECT WAY TO UNWIND AND RECHARGE AFTER AN ENERGIZING GAME OF PADEL.  
DESIGNED FOR BOTH FITNESS AND RELAXATION, IT BRINGS WELLNESS TO YOUR DOORSTEP.

JUMEIRAH VILLAGE TRIANGLE

PHASE EIGHT DEVELOPMENT



JUMEIRAH VILLAGE TRIANGLE

MR. EIGHT DEVELOPMENT



*Sky Garden*

# SUNSET PICNIC DECK

ATOP INTERSTELLAR TOWER LIES A LUSH, ELEVATED SANCTUARY — A GREEN PARK WITH MEANDERING WALKWAYS, SHADED PICNIC SPOTS, AND SERENE BBQ LOUNGES. AT ITS HEART FLOWS A TRANQUIL SLOW RIVER — A DECORATIVE WATER FEATURE THAT WINDS GRACEFULLY THROUGH THE LANDSCAPE, SURROUNDED BY TREES, BRIDGES, AND SEATING AREAS. MORE THAN JUST A ROOFTOP, IT'S A PEACEFUL ESCAPE DESIGNED FOR RELAXATION, CONNECTION, AND TIMELESS MOMENTS ABOVE THE CITY.

# *Sustainable Concept* GREEN RIVER PARK

A UNIQUE ARCHITECTURAL CONCEPT —  
A LUSH ROOFTOP SANCTUARY FEATURING A SLOW-FLOWING RIVER, PICNIC LAWNS, BBQ LOUNGES, AND WALKING BRIDGES.  
DESIGNED FOR INTERSTELLAR TOWER RESIDENTS, IT BRINGS THE SERENITY OF NATURE TO YOUR DOORSTEP,  
ALLOWING YOU TO RELAX, GATHER, AND RECONNECT WITHOUT EVER LEAVING HOME.

ATOP INTERSTELLAR TOWER LIES A LUSH, ELEVATED SANCTUARY — A GREEN PARK WITH MEANDERING WALKWAYS, SHADED PICNIC SPOTS, AND SERENE BBQ LOUNGES.  
AT ITS HEART FLOWS A TRANQUIL SLOW RIVER — A DECORATIVE WATER FEATURE THAT WINDS GRACEFULLY THROUGH THE LANDSCAPE, SURROUNDED BY TREES, BRIDGES, AND SEATING AREAS.  
MORE THAN JUST A ROOFTOP, IT'S A PEACEFUL ESCAPE DESIGNED FOR RELAXATION, CONNECTION, AND TIMELESS MOMENTS ABOVE THE CITY.

JUMEIRAH VILLAGE TRIANGLE

MR. HIGHT DEVELOPMENT

*Sustainable vision*  
**WELLNESS DECK**

A SANCTUARY OF MOVEMENT AND MINDFULNESS, THE WELLNESS DECK OFFERS A CURATED BLEND OF RECREATION AND RELAXATION. SET WITHIN A LUSH GREEN PARK, THIS ELEVATED SPACE FEATURES A PROFESSIONAL PADDLE TENNIS COURT AND A 29-METER SWIMMING POOL WITH AN ISLAND-STYLE FIRE LOUNGE AT ITS CENTER. SURROUNDED BY PRIVATE CABANAS AND SHADED GREENERY, IT'S THE PERFECT PLACE TO UNWIND, RECHARGE, OR SIMPLY ENJOY THE RHYTHM OF REFINED OUTDOOR LIVING.

# ROOFTOP CINEMA

A UNIQUE ARCHITECTURAL CONCEPT —  
THE INTERSTELLAR ROOFTOP IS A SIGNATURE DESTINATION — BLENDING AN OPEN-AIR CINEMA, BBQ LOUNGE, STARGAZING TELESCOPE,  
AND A COZY FIREPIT INTO ONE CAPTIVATING SPACE. A TRUE SOCIAL SANCTUARY ABOVE THE CITY, IT DEFINES THE SOUL OF THE TOWER.

JUMEIRAH VILLAGE TRIANGLE

MR. EIGHT DEVELOPMENT

JUMEIRAH VILLAGE TRIANGLE

MR. EIGHT DEVELOPMENT



JUMEIRAH VILLAGE TRIANGLE

M R . E I G H T D E V E L O P M E N T

# LET KIDS DREAM: THE PLAYGROUND

A DEDICATED SPACE WHERE IMAGINATION TAKES FLIGHT. NESTLED IN A LUSH GREEN OASIS ACCESSIBLE TO ALL RESIDENTS, THIS ZONE FEATURES A UNIQUE PLAYGROUND AND A SAFE, PRIVATE KIDS' POOL — DESIGNED TO SPARK CREATIVITY AND JOYFUL MOMENTS EVERY DAY.

JUMEIRAH VILLAGE TRIANGLE

MR. EIGHT DEVELOPMENT



JUMEIRAH VILLAGE TRIANGLE

MR. EIGHT DEVELOPMENT

## IT'S WONDERFUL WHEN A CHILD HAS A WORLD OF THEIR OWN

IT'S A BEAUTIFUL THING WHEN A CHILD HAS A WORLD TO CALL THEIR OWN — A ROOM DESIGNED NOT JUST FOR REST, BUT FOR IMAGINATION AND PLAY. THIS SPACE INCLUDES EVERY KIND OF GAME A CHILD COULD DREAM OF, FROM INTERACTIVE VIDEO GAMES TO THOUGHTFUL EDUCATIONAL ACTIVITIES. WHETHER IT'S YOU SPENDING QUALITY TIME TOGETHER OR A NANNY JOINING THE FUN, THIS ROOM IS MADE FOR JOYFUL MOMENTS AND ENDLESS DISCOVERY.





# INTERSTELLAR *Tower* ARTWORK LOBBY



MR. EIGHT  
DEVELOPMENT  
**WINNER 2025**  
BEST LUXURY SUSTAINABLE  
RESIDENTIAL DEVELOPMENT  
DUBAI, UAE



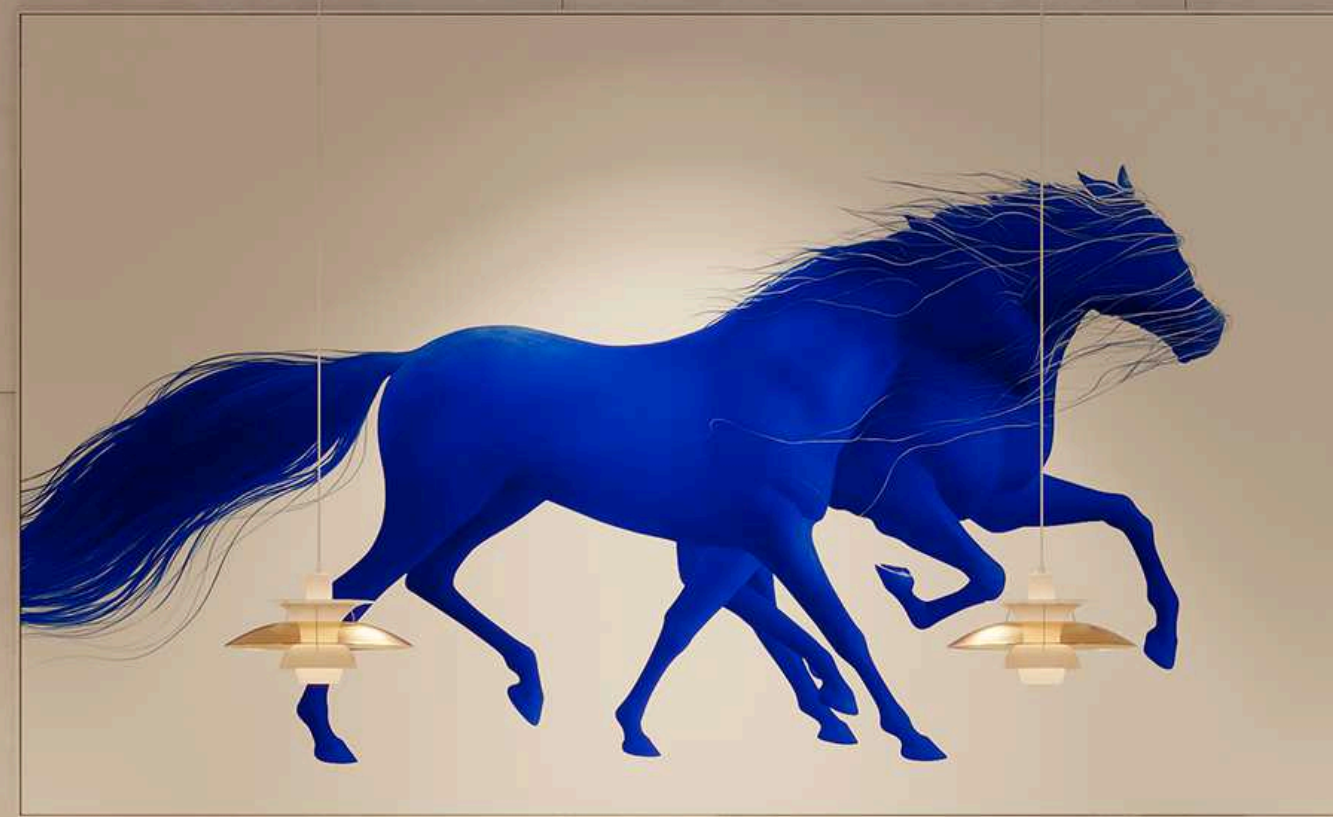
MR. EIGHT  
DEVELOPMENT  
**WINNER 2025**  
BEST LUXURY SUSTAINABLE  
HIGH RISE LIVING  
DUBAI, UAE

## BRANDED RESIDENCES BY MR.EIGHT

INSPIRED BY AIR, MOTION, AND LOCAL ARTISTRY, THE LOBBY OF INTERSTELLAR TOWER IS A BOLD INTERPRETATION OF MODERN ELEGANCE. AT ITS HEART STANDS A STRIKING MURAL OF TWO GALLOPING HORSES—CRAFTED BY UAE-BASED ARTISTS—CAPTURING THE ESSENCE OF FREEDOM AND COURAGE. THIS SIGNATURE SPACE FUSES FLUID ARCHITECTURAL LINES WITH CURATED DESIGN, OFFERING RESIDENTS AN ATMOSPHERE THAT IS BOTH UPLIFTING AND ICONIC. A TRUE STATEMENT OF CONTEMPORARY LUXURY, WHERE ART MEETS PURPOSE.

JUMEIRAH VILLAGE TRIANGLE

MR. EIGHT DEVELOPMENT



RECEPTION

INTERSTELLAR

# Cassina

ICONIC FURNITURE AT YOUR LOBBY  
INTERIORS DESIGNED BY MR. EIGHT ATELIER

LOBBY FURNITURE AT INTERSTELLAR TOWER IS CAREFULLY SELECTED FROM ICONIC PIECES, GIVING RESIDENTS THE CHANCE TO ENJOY TIMELESS STYLE FROM THE WORLD OF FURNITURE DESIGN.



SORIANA SOFA, DESIGNED BY AFRA AND TOBIA SCARPA FOR CASSINA (1969). CASSINA HISTORIC ARCHIVE. PHOTOGRAPHY BY FALCHI SALVADOR.



THE SORIANA SOFA — A DESIGN ICON DESIGNED IN 1969 BY AFRA AND TOBIA SCARPA, SORIANA REDEFINED COMFORT WITH ITS UNIQUE SHAPE HELD BY A METAL FRAME—NO INNER STRUCTURE NEEDED. AWARDED THE COMPASSO D'ORO IN 1970. IT BLENDS FORMAL AND CASUAL STYLE. TODAY, IT FEATURES SUSTAINABLE BIOFOAM® PADDING, REFLECTING A NEW ERA OF CONSCIOUS DESIGN.



DESIGNER TOBIA SCARPA WITH THE SORIANA ARMCHAIR. PHOTOGRAPHY BY ALAN CHIES.



THE SEAT'S COMFORT IS FURTHER HEIGHTENED THANKS TO A 100% RECYCLED BLOWN FIBRE PADDING PRODUCED FROM PET RECOVERED FROM PLASTIC BANK®

# LASVIT

ICONIC ART WALLS AT YOUR LOBBY

INTERIORS DESIGNED IN COLLABORATION WITH MR. EIGHT ATELIER

THE LOBBY AT INTERSTELLAR TOWER IS ADORNED WITH EXQUISITE GLASS CREATIONS BY LASVIT, A RENOWNED CZECH COMPANY CELEBRATED WORLDWIDE FOR ITS BESPOKE LIGHTING INSTALLATIONS AND ARCHITECTURAL GLASS ART. SINCE ITS FOUNDING IN 2007, LASVIT HAS COLLABORATED WITH TOP GLOBAL DESIGNERS TO CRAFT SIGNATURE PIECES FEATURED IN LUXURY HOTELS, PRIVATE RESIDENCES, AND ICONIC BUILDINGS ACROSS THE GLOBE.



CRAFTED BY RENOWNED CZECH BRAND LASVIT. THIS GLASS INSTALLATION SHOWCASES THE BRAND'S SIGNATURE PRECISION AND ARTISTRY.



3 STARS – THE MICHELIN GUIDE RESTAURANT / LONDON BY LASVIT DESIGN TEAM  
PHOTO BY @MARKCOCKSEGE



LASVIT ART WALL "LABRICK"  
CRAFTED BY RENOWNED CZECH BRAND LASVIT. THIS GLASS INSTALLATION SHOWCASES THE BRAND'S SIGNATURE PRECISION AND ARTISTRY. EACH ELEMENT IS A HANDCRAFTED PIECE OF ART, REFLECTING THE COMPANY'S MASTERY IN CREATING JEWEL-LIKE ARCHITECTURAL GLASS WORKS.

# Tom Dixon.

ICONIC FURNITURE AT YOUR LOBBY  
INTERIORS DESIGNED BY MR. EIGHT ATELIER

TOM DIXON PIECES FEATURED IN THE INTERSTELLAR TOWER LOBBY  
A STATEMENT OF DESIGN EXCELLENCE AT THE HEART OF THE RESIDENCE.



TOM DIXON IS A RENOWNED BRITISH DESIGNER KNOWN FOR HIS BOLD, INDUSTRIAL-INSPIRED FURNITURE AND LIGHTING. BASED IN LONDON, HE ROSE TO FAME IN THE LATE 1990S AND FOUNDED HIS OWN BRAND IN 2002. HIS WORK BLENDS INNOVATION, CRAFTSMANSHIP, AND SCULPTURAL FORM, EARNING GLOBAL RECOGNITION IN THE WORLDS OF DESIGN, ARCHITECTURE, AND INTERIORS.



TOM DIXON FAT CHAIR



FAT CHAIR BY TOM DIXON  
DESIGNED TO HUG THE BODY AND OFFER MAXIMUM COMFORT, THE FAT CHAIR IS ONE OF TOM DIXON'S MOST RECOGNIZABLE PIECES. ITS ROUNDED, SCULPTURAL FORM RESTS ON A SLEEK METAL BASE, BLENDING PLAYFULNESS WITH ELEGANCE. UPHOLSTERED IN HIGH-QUALITY FABRIC OR LEATHER, THE CHAIR IS BOTH A STATEMENT PIECE AND A FUNCTIONAL SEAT — DESIGNED TO STAND OUT IN ANY SPACE.



TOM DIXON: SIGNATURE LIGHTING & FURNITURE COLLECTION  
A BOLD FUSION OF FORM, FUNCTION, AND BRITISH DESIGN EXCELLENCE.

# B&B ITALIA

TIMELESS AT YOUR LOBBY

INTERIORS DESIGNED IN COLLABORATION WITH MR. EIGHT ATELIER

ICONIC FURNITURE COLLECTION BY CASSINA & B&B ITALIA — TIMELESS PIECES THAT COMPLETE THE INTERSTELLAR LOBBY  
EACH ITEM CARRIES A STORY, ADDING DEPTH AND CHARACTER TO THE OVERALL DESIGN.



ICONIC CHAIR BY B&B ITALIA CELEBRATES 50TH ANNIVERSARY. THIS YEAR, TO CELEBRATE THE 50TH BIRTHDAY OF THE CHAIR, B&B ITALIA HAS OPENED ITS WARDROBE UP TO ORANGE-RED.



THE ORIGINAL UP CHAIR, DESIGNED IN 1969, WAS MANUFACTURED BY C&B ITALIA (NOW B&B ITALIA). IT WAS MADE FROM POLYURETHANE, ARRIVED FLAT, AND ROSE TO ITS FINAL SHAPE WITH THE HELP OF FREON GAS.



CAMALEONDA, THE SOFA SYSTEM DESIGNED IN 1970 BY MARIO BELLINI. THIS MODULAR SOFA HAS DEFINED THE AESTHETICS OF AN ENTIRE ERA OF INTERIOR DESIGN, THANKS TO ITS GREAT SUCCESS BOTH IN TERMS OF THE PUBLIC AND CRITICS.



MARIO BELLINI IS AN ITALIAN DESIGNER KNOWN FOR HIS ICONIC CREATIONS IN FURNITURE AND ARCHITECTURE ONE OF WHICH THE CAMALEONDA COUCH, DESIGNED IN 1970, IS A TIMELESS MASTERPIECE THAT HAS BECOME AN ICON IN THE DESIGN WORLD WITH ITS UNIQUE DESIGN, WITH INTERCHANGEABLE ELEMENTS AND VERSATILE SEATING OPTIONS, HAS MADE IT A BELOVED PIECE OF FURNITURE FOR DECADES.

JUMEIRAH VILLAGE TRIANGLE

M.R. EIGHT DEVELOPMENT





JUMEIRAH VILLAGE TRIANGLE

MR. EIGHT DEVELOPMENT

A GRAND, LIGHT-FILLED LOBBY DESIGNED TO INSPIRE — WHERE SOARING CEILINGS, CURATED ART, AND  
THOUGHTFUL DETAILS AWAKEN CREATIVITY AND ELEVATE EVERYDAY ARRIVALS.

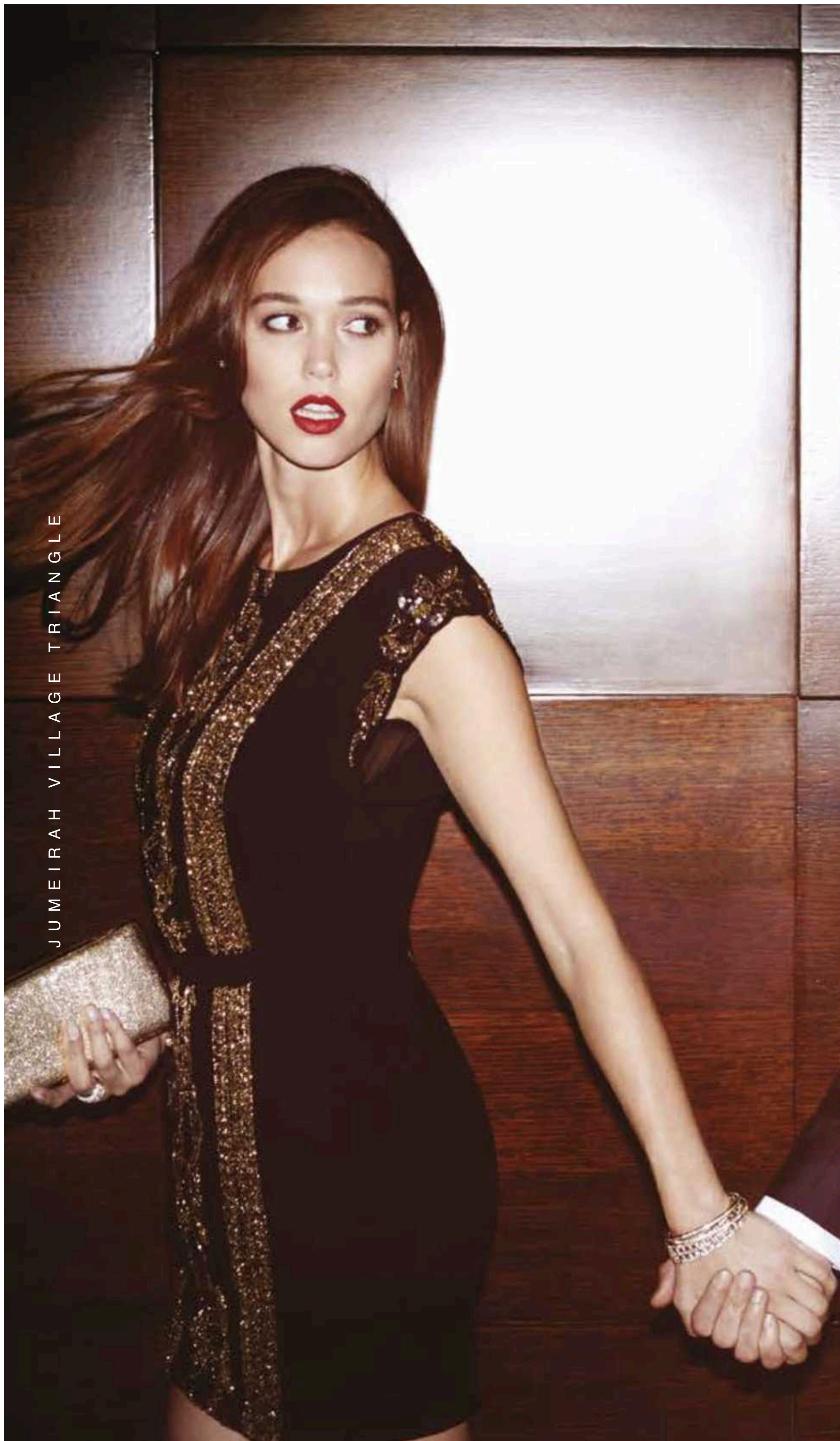
# atmosphere

# balance

THE CENTER OF A SPACE MUST HOLD A SOURCE OF POSITIVE ENERGY. AT THE HEART OF THIS GRAND, SOARING LOBBY STANDS A SCULPTURAL TREE, SYMBOLIZING LIFE, RENEWAL, AND CONNECTION. FLOATING IN LIGHT AND AIR, IT GROUNDS THE ENTIRE BUILDING IN HARMONY, OFFERING RESIDENTS A DAILY ENCOUNTER WITH SERENITY AND INSPIRATION.

JUMEIRAH VILLAGE TRINITY

MR. EIGHT DEVELOPMENT



JUMEIRAH VILLAGE TRIANGLE



INTERSTELLAR RESIDENCES | DUBAI

8

MEN'S STORIES  
EIGHT DEVELOPMENT



**Tom  
Dixon.**  
*coffee*

SIGNATURE LOBBY & TOM DIXON CAFÉ  
AT THE HEART OF INTERSTELLAR TOWER'S GRAND ENTRANCE IS A  
STUNNING LOBBY DESIGNED IN COLLABORATION WITH WORLD-  
RENOWNED DESIGNER TOM DIXON.

A SCULPTURAL TREE ANCHORS THE SPACE, SURROUNDED BY RICH  
TEXTURES, ICONIC LIGHTING, AND A DEDICATED TOM DIXON CAFÉ  
OFFERING COMPLIMENTARY COFFEE FOR RESIDENTS.

MORE THAN JUST A PLACE TO GRAB A DRINK, THE CAFÉ IS A DESIGN  
STATEMENT AND A PART OF DAILY LIFE—BLENDING ELEGANCE,  
COMFORT, AND A CURATED LIFESTYLE.





JUMEIRAH VILLAGE TRIANGLE

MR. EIGHT DEVELOPMENT



JUMEIRAH VILLAGE TRIANGLE

MR. EIGHT DEVELOPMENT





# INTERSTELLAR

INTERSTELLAR TOWER BRANDED RESIDENCES BY MR. EIGHT



JUMEIRAH VILLAGE TRIANGLE

MR. EIGHT DEVELOPMENT



## INTERSTELLAR *Residence*

### RESIDENTS LOBBY LOUNGE

The Grand Lobby at Interstellar Tower serves the residential community with two distinct zones: a welcoming lounge area for guests and casual meetings, and a cozy residents' corner designed for relaxation, reading, or quiet conversation — all surrounded by curated design and lush greenery.

## B&B Cassina ITALIA

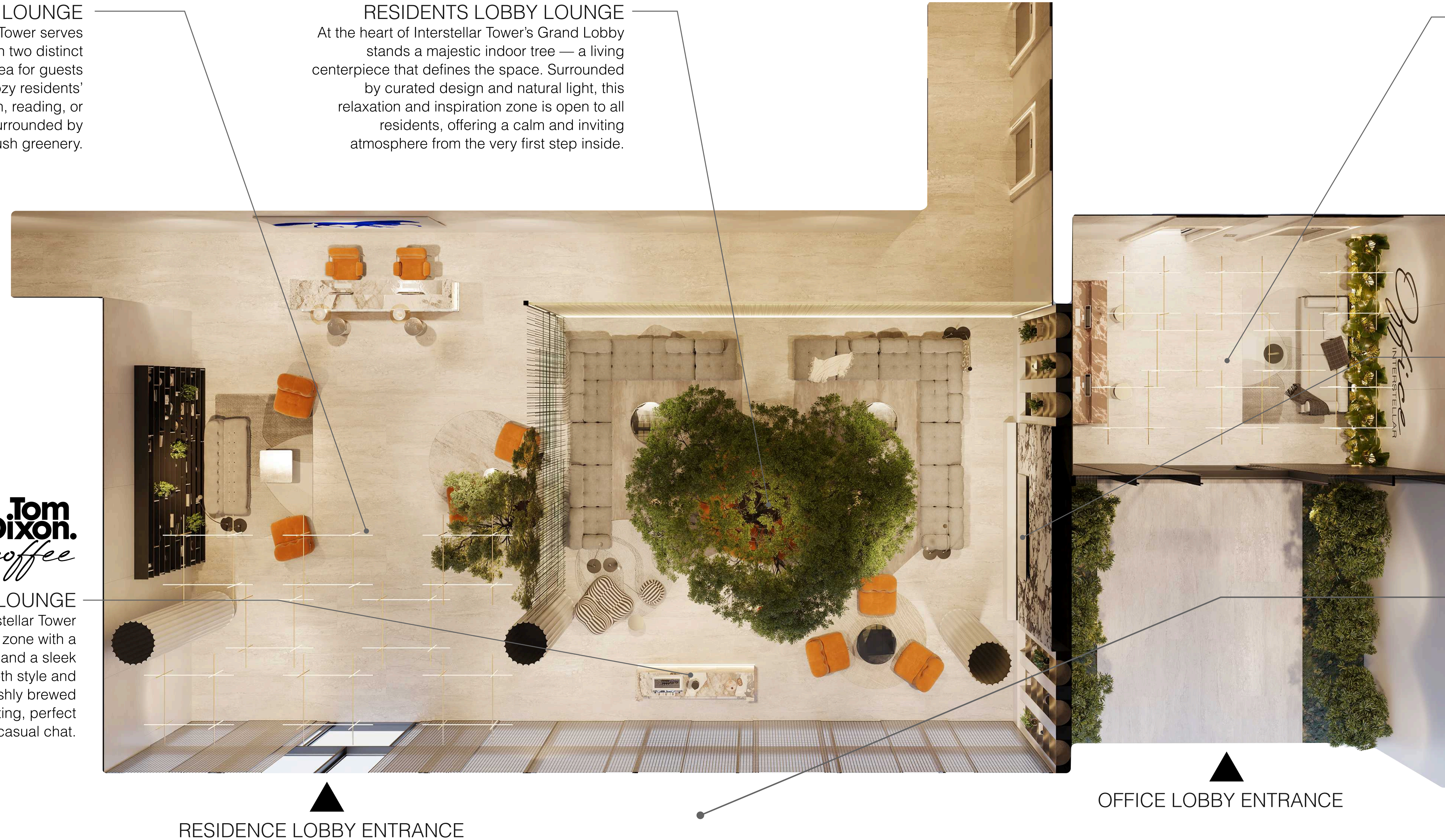
### RESIDENTS LOBBY LOUNGE

At the heart of Interstellar Tower's Grand Lobby stands a majestic indoor tree — a living centerpiece that defines the space. Surrounded by curated design and natural light, this relaxation and inspiration zone is open to all residents, offering a calm and inviting atmosphere from the very first step inside.

## INTERSTELLAR *Office*

### OFFICE LOBBY LOUNGE

Interstellar Tower features a dedicated office lobby with two high-speed elevators, ensuring smooth and private access to the business floors. A separate business lounge is also available exclusively for office visitors, providing a comfortable and professional meeting environment.



**Tom  
Dixon.**  
*coffee*

### RESIDENTS LOBBY LOUNGE

The Tom Dixon Café at Interstellar Tower features a dedicated barista zone with a professional-grade coffee machine and a sleek service counter. Designed for both style and function, it offers residents freshly brewed coffee in a beautifully curated setting, perfect for a quick break or a casual chat.

### FIREPLACE LOUNGE

The central area of the Grand Lobby features a large built-in fireplace set within a dramatic Calacatta marble wall. Above it, a 200-inch screen creates a cinematic atmosphere.

### VALET PARKING

Interstellar Tower offers valet parking and a dedicated entrance to the office lobby, ensuring a seamless arrival experience for business tenants and their guests. The private access point leads directly to a professional lobby lounge with high-speed elevators, separate from the residential areas.

RESIDENCE LOBBY ENTRANCE

OFFICE LOBBY ENTRANCE

## INTERSTELLAR GROUND FLOOR

ICONIC DESIGN & TIMELESS COMFORT IN THE GRAND LOBBY THE INTERSTELLAR TOWER GRAND LOBBY FEATURES A CURATED COLLECTION OF ICONIC FURNITURE FROM B&B ITALIA, CASSINA, AND TOM DIXON. LUSH GREENERY ADDS WARMTH AND OPENNESS TO THE SPACE, CREATING A REFINED ATMOSPHERE FOR CREATIVITY, MEETINGS, AND QUIET MOMENTS. RESIDENTS ENJOY COMPLIMENTARY COFFEE AT THE TOM DIXON CAFÉ AND RELAX BY THE ELEGANT CENTRAL GAS FIREPLACE — A SPACE WHERE DESIGN MEETS EVERYDAY INSPIRATION.



# INTERSTELLAR

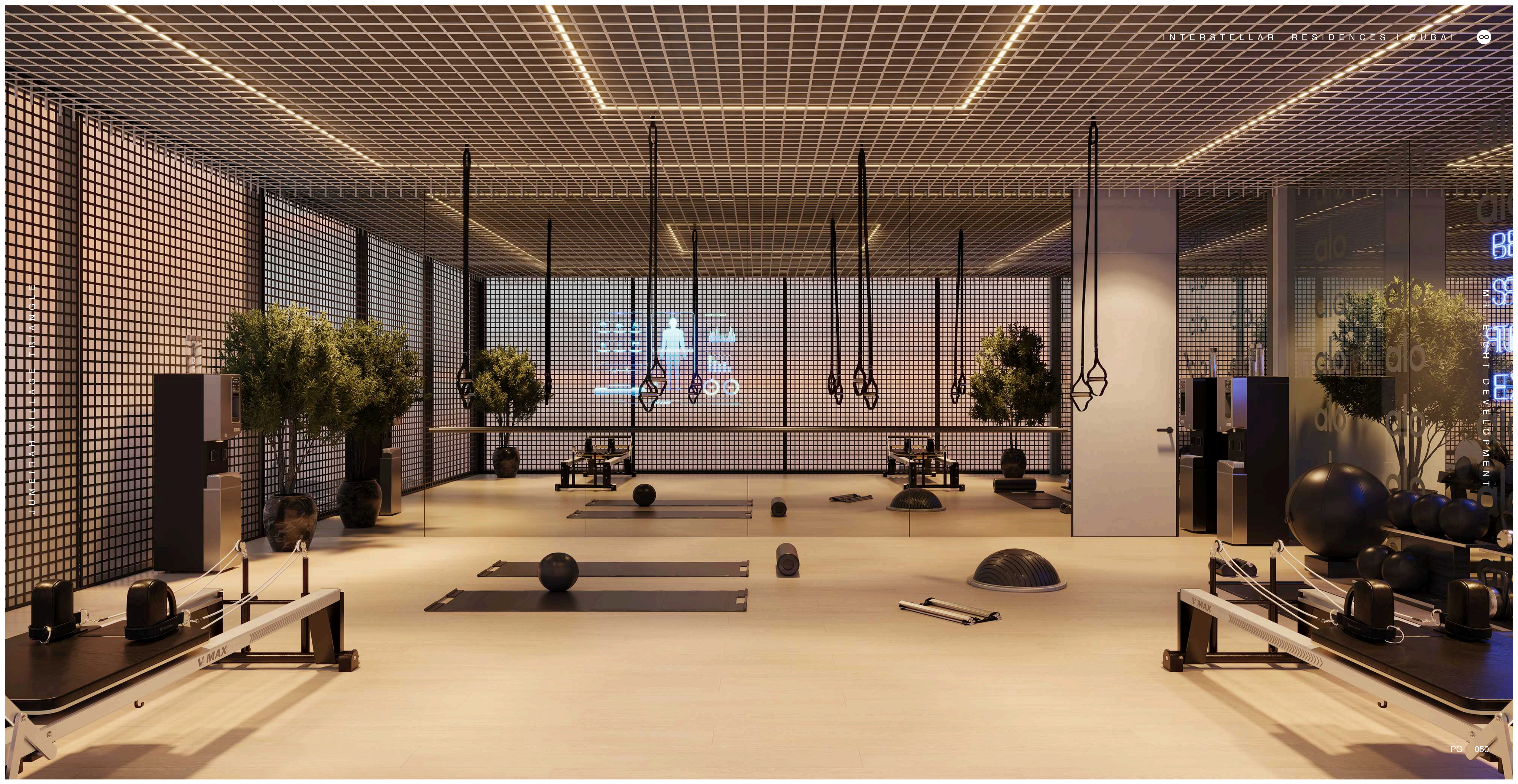
## *Wellness*

Interstellar Tower is equipped with premium fitness machines by Technogym, the renowned Italian brand known for its innovation, performance, and sleek design. Residents enjoy world-class training experiences with equipment trusted by top athletes and luxury wellness centers around the globe.



JUMEIRAH VILLAGE TRIANGLE

PHYSICIAN DEVELOPMENT





BE  
STRONGER  
THAN YOUR  
EXCUSES

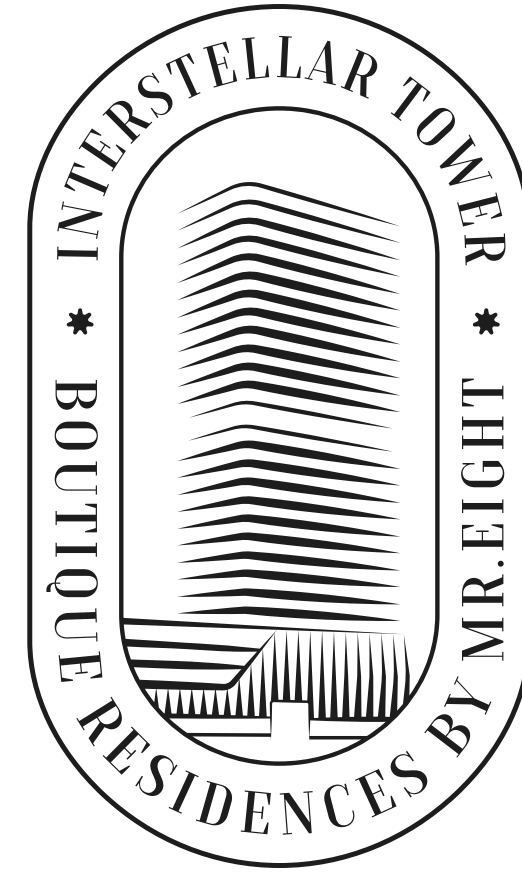
JUMEIRAH VILLAGE TRANGLE

MR. EIGHT DEVELOPMENT

JUMEIRAH VILLAGE TRIANGLE



MR. EIGHT DEVELOPMENT



# INTERSTELLAR

INTERSTELLAR TOWER BRANDED RESIDENCES BY MR. EIGHT

## *Residence*

- TRAVERTINE-EFFECT PORCELAIN TILES – FEATURED THROUGHOUT BATHROOMS, GUEST ROOMS, AND BALCONIES, OFFERING A SOPHISTICATED STONE-LIKE AESTHETIC WITH THE DURABILITY OF MODERN TILE.
  - SOFT CARPET FLOORING IN BEDROOMS – ADDS WARMTH AND ACOUSTIC COMFORT, CREATING A COZY RETREAT.
- WALL AND FLOOR TILING IN BATHROOMS – ALL BATHROOM SURFACES ARE FULLY TILED USING HIGH-QUALITY PORCELAIN WITH A TRAVERTINE EFFECT, DELIVERING A SLEEK AND ELEGANT APPEARANCE.
  - SANITARY WARE BY VITRA – SLEEK, MODERN DESIGNS COMBINING BEAUTY WITH PERFORMANCE.
- PREMIUM ITALIAN KITCHENS – PAIRED WITH STYLISH STONE-EFFECT COUNTERTOPS AND BOSCH BUILT-IN APPLIANCES FOR SEAMLESS FUNCTIONALITY.
  - BUILT-IN WARDROBES – FITTED WITH LED-LIT INTERIORS AND GLASS DOORS FOR A MODERN TOUCH.
  - LIGHTING BY ZONDA LIGHTING – AMBIENT AND ARCHITECTURAL LIGHTING THROUGHOUT ALL AREAS.
    - MATTE PREMIUM SWITCHES AND SOCKETS

 **BOSCH**    **zonda**lighting

JUMEIRAH VILLAGE TRIANGLE

WRITTEN AND DIRECTED BY  
CHRISTOPHER NOLAN

MR. EIGHT DEVELOPMENT

JUMEIRAH VILLAGE TRIANGLE



MR. EIGHT DEVELOPMENT

JUMEIRAH VILLAGE TRIANGLE

MR. EIGHT DEVELOPMENT



JUMEIRAH VILLAGE TRIANGLE

GH T DEVELOPMENT



JUMEIRAH VILLAGE TRIANGLE

MR. EIGHT DEVELOPMENT



JUMEIRAH VILLAGE TRIANGLE

MR. EIGHT DEVELOPMENT



JUMEIRAH VILLAGE TRIANGLE

MR. EIGHT DEVELOPMENT





JUMEIRAH VILLAGE TRIANGLE

MR. EIGHT DEVELOPMENT



JUMEIRAH VILLAGE TRIANGLE

MR. EIGHT DEVELOPMENT



JUMEIRAH VILLAGE TRIANGLE

MR. EIGHT DEVELOPMENT





JUMEIRAH VILLAGE TRIANGLE

MR. EIGHT DEVELOPMENT



JUMEIRAH VILLAGE TRIANGLE





# INTERSTELLAR TOWER

≈400m

**64 KM**

Total Length Of  
Entire Project.

**20 MIN**

Supports Dubai's 20 -  
Minute City Initiative.

**130K**

Powers Approx  
130,000 Homes.

**1 MIL**

Features Over 1  
Million Trees.

**100%**

Trams Powered Entirely By  
Solar Energy.

**DUBAI**  
*Green Spine*  
SHEIKH MOHAMMED BIN ZAYED ROAD

JUMEIRAH VILLAGE TRIANGLE

PHASE EIGHT DEVELOPMENT



# INTERSTELLAR *Tower*

## ROOF BBQ AREA

The rooftop BBQ and picnic area features seating for up to 50 guests, complete with a professional-grade outdoor kitchen — ideal for grilling, dining, and celebrating under the open sky.

## ROOF CINEMA

The rooftop cinema at Interstellar Tower offers plush lounge seating under the open sky — a perfect spot to enjoy films surrounded by stars and skyline views.

## PRIVATE OFFICES

Private offices at Interstellar Tower feature a dedicated entrance and lobby, offering the perfect work-life balance with seamless access between home and workplace in one exclusive address.

## ACTIVE LIVING: PADEL, TENNIS & WELLNESS

The wellness zone offers expansive green landscapes, two swimming pools, and dedicated paddle and tennis courts — creating a perfect balance of relaxation and active lifestyle.

## THE PARK'S GREEN ZONE

Dubai's longest decorative rooftop river flows through a lush green park, featuring dedicated picnic areas and serene family zones — a private sky garden for residents.

## OBSERVATORY

a powerful stargazing telescope anchors the rooftop observatory — a space designed for residents to marvel at the cosmos, gather with friends, and experience the universe from the comfort of home.

## KIDS PLAY LOUNGE

A playful retreat designed just for children, featuring a PlayStation zone, a pottery corner for artistic expression, and cozy spaces where kids can relax and enjoy time away from the grown-ups.

## 360-DEGREE VIEWS

The 360-degree panoramic terraces at Interstellar Tower offer breathtaking views in every direction — from the serene villas of Emirates Hills to the iconic skylines of Marina and JLT — allowing residents to experience Dubai from every angle.

## VALET PARKING

Valet parking at Interstellar Tower offers residents effortless convenience and five-star service.



# INTERSTELLAR

*Branded Residences*

## MR EIGHT TAILORED SERVICES

### PRIVATE VITO SHUTTLE ACCESS



All residents of Interstellar Tower have access to a dedicated Mercedes-Benz Vito minivan service, available for daily school transfers as well as other transportation needs within the city. Availability is subject to scheduling and prior reservation.

### RESIDENT AND GUEST VALET



A white-glove valet and bellboy service welcomes both residents and their guests with seamless elegance. From car drop-off to luggage assistance, every arrival is met with polished hospitality and impeccable care.

### IN-HOUSE CONCIERGE SERVICE



Resident concierge service at Interstellar Tower offers seamless, white-glove assistance—from handling luggage to booking personal services—ensuring every detail of your daily life is managed with precision, privacy, and care.

*Branded Residences*  
**INTERSTELLAR**  
*Tower*

**BUILDING STRUCTURE**  
**G+5 PARKING FLOORS + 24 FLOORS**  
**HANDOVER Q3 2028**

- 1 BEDROOM 184 UNITS 1 PARKING
- 2 BEDROOMS 56 UNITS 1 PARKING
- 3 BEDROOMS 17 UNITS 2 PARKINGS
- GARDEN HOMES 30 UNITS 1 PARKING

**UNIT BREAKDOWN**

- 1BR 674 SQ.FT - 840 SQ.FT AED 1,120,000 - 1,480,000
- 2BR 970 SQ.FT - 1,346 SQ.FT AED 1,631,000 - 2,073,000
- 3BR 1,539 SQFT AED 2,557,000 - 2,803,000

**SERVICE CHARGE**

APARTMENT AREA IS AED 18/SQ.FT  
THE BALCONY AREA AED 4.5/SQ.FT

# 50/50

## INVESTMENT PLAN

- BOOKING AED 50,000
- FIRST PAYMENT 20% + 4% DLD FEE+ 5,000 AED ADMIN FEE
- SECOND PAYMENT 5% WITHIN 6 MONTHS FROM BOOKING DATE
- THIRD PAYMENT 5% AFTER 12 MONTHS
- FOURTH PAYMENT 10% WHEN THE BUILDING IS READY FOR 30%
- FIFTH PAYMENT 10% WHEN THE BUILDING IS READY FOR 75%
- SIXTH PAYMENT 50% WHEN THE BUILDING IS READY FOR 100% Q3 2028

*Starting from*

- 1 BEDROOM: AED 1,120,000
- 2 BEDROOM: AED 1,631,000
- 3 BEDROOM: AED 2,557,000

- 50% OF THE TOTAL PROPERTY VALUE IS PAID DURING THE CONSTRUCTION PHASE.
- THE REMAINING 50% IS PAID AFTER HANDOVER, WITH AN OPTION TO SECURE BANK FINANCING FOR THIS PORTION.

Developer

Mr. Eight Development

Architecture

Model Engineering

Product & Brand Identity

Emils Daujats

PR Communication

Leidar.com

# INTERSTELLAR

INTERSTELLAR TOWER BRANDED RESIDENCES BY MR. EIGHT

## MINDFUL LUXURY

WHERE ELEGANCE, COMFORT, AND HIGH QUALITY  
MEET SUSTAINABILITY, ETHICS, AND EMOTIONAL VALUE

Rising with distinction in the heart of Jumeirah Village Triangle, Interstellar Tower by Mr. Eight Development redefines vertical living in Dubai through a seamless blend of luxury, sustainability, and visionary design. Recognized globally with two prestigious luxury lifestyle awards — for sustainable high-rise living and sustainable residential development — this architectural statement brings together panoramic views of Emirates Hills' rolling golf greens and the glittering skylines of Marina and JLT. Designed for discerning residents who value space, peace, and permanence, the tower offers unobstructed vistas guaranteed by its location in a fully built-out community. Upon entering the signature lobby — conceptualized in collaboration with British design icon Tom Dixon — residents are greeted by a sculptural indoor tree and a bespoke mural of two galloping horses, a symbol of freedom and cosmic movement. The rooftop, exclusively accessible to residents, is a private world above the city featuring the largest decorative slow river in Dubai, a landscaped green park, bridges, BBQ areas, a firepit cinema, and a stargazing platform with a professional-grade telescope — all forming a sanctuary of nature and discovery high in the sky. The ground floor houses a stylish barista-run coffee lounge serving specialty Ethiopian coffee, a breakfast café, and even a kindergarten, while the podium level features a paddle court, modern lap pool, and panoramic fitness center. Residents enjoy full-service living with Mr. Eight Services offering valet, and Mercedes Vito school transfers to top institutions like Sunmarke and Arcadia School.

ALL DRAWINGS AND VISUALS ARE CONCEPTUAL RENDERINGS, AND MR. EIGHT DEVELOPMENT EXPRESSLY RESERVES THE RIGHT TO MAKE MODIFICATIONS AT ANY TIME. ACTUAL VIEWS MAY VARY AND CANNOT BE GUARANTEED. VIEWS SHOWN SHOULD NOT BE RELIED UPON AS THE ACTUAL VIEW FROM ANY SPECIFIC UNIT WITHIN THE DEVELOPMENT. PRICES, PLANS, DESIGN INTERPRETATIONS, AND SPECIFICATIONS ARE SUBJECT TO CHANGE WITHOUT PRIOR NOTICE. PHOTOGRAPHS USED IN MARKETING MATERIALS MAY BE STOCK IMAGERY INTENDED TO ILLUSTRATE POTENTIAL LIFESTYLES AND DO NOT REFLECT ACTUAL UNIT CONDITIONS. ALL DIMENSIONS ARE APPROXIMATE, AND FLOOR PLANS ARE SUBJECT TO UPDATES. MR. EIGHT DEVELOPMENT MAKES NO REPRESENTATION OR WARRANTY THAT THE FINAL SQUARE FOOTAGE OR LAYOUTS WILL MATCH THOSE DEPICTED IN PROMOTIONAL MATERIALS. IMPROVEMENTS, LANDSCAPING, AND AMENITIES SHOWN MAY BE CONCEPTUAL AND ARE NOT GUARANTEED TO BE DELIVERED AS ILLUSTRATED. THIS IS NOT AN OFFER TO SELL OR SOLICIT IN ANY JURISDICTION WHERE SUCH ACTIVITY IS RESTRICTED. PLEASE CONSULT THE OFFICIAL PROSPECTUS OR SALES AGREEMENT FOR BINDING TERMS AND SPECIFICATIONS. BUYERS ARE ADVISED TO CONDUCT THEIR OWN DUE DILIGENCE PRIOR TO MAKING A PURCHASE DECISION.

*p.s. mr. eight*

“TO CREATE SOMETHING EXCEPTIONAL, YOUR MINDSET MUST BE  
RELENTLESSLY FOCUSED ON THE SMALLEST DETAIL.”

# INTERSTELLAR

MINDFUL LUXURY



*Signature Collection*  
BRANDED RESIDENCES BY MR.EIGHT